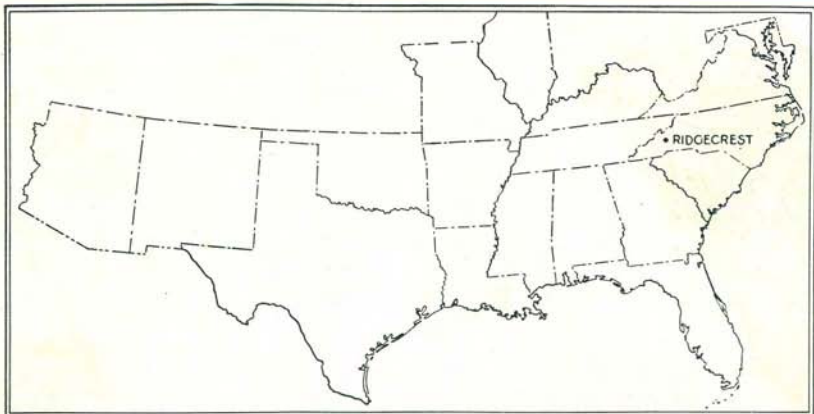


1930

# Camp Ridgecrest (No. 1)





Tickets can be bought at the regular summer rate of one fare plus sixty per cent.

Ridgecrest Assembly station is on the Southern Railway eighteen miles east of Asheville and tickets can be purchased to that destination as well as baggage checked.

You will be met and cared for at the station.

It is suggested you get in touch with boys from your neighborhood or the Camp Counselor from your state and so travel with good company.



## TO PARENTS

IS your boy a real "live, honest-to-goodness, boy"? Are you giving him the opportunities in life that he is asking? Have you considered sending your boy to a camp?

Camp Ridgecrest, owned and conducted by the Baptist Sunday School Board, is located in the magnificent mountains of Western North Carolina, twenty miles east of Asheville. It has an altitude of approximately 2,600 feet above sea level. It is a part of the grounds of the Southern Baptist Assembly, which attracts religious leaders from all parts of the South. And offers to the life of the growing boy, weeks which will be most helpful in a well-rounded development. In this way your boy will be surrounded by a religious atmosphere. The boys will be under the guidance of young men who have had experience in working with boys in their own communities and churches. Most of these men come from Southern colleges, are active, alert, wide-awake young men, eager to enter into the life of your boy, helping them to broaden and mold their lives in a Christian way. ¶



1930

## Camp Ridgecrest (N.C.)

OUR Camp is located in the heart of the beautiful Blue Ridge Mountains twenty miles east of Asheville and approximately 2,600 feet above sea level, and is designed to offer to the life of the growing boy, weeks which will be most meaningful in a well-rounded development. Located as it is in the midst of scenery comparable in beauty to any in the world, a climate which is invigorating to all who come, and in the atmosphere of the Southern Baptist Assembly which attracts religious leaders from all parts of the South; it seems that Camp Ridgecrest is in the position to surround the boy with the influence which will be most helpful in guiding him through the period of character determination.

Camp Ridgecrest is part of the grounds of the Southern Baptist Assembly, and is under the general direction of the Sunday School Board of the Southern Baptist Convention. Its operation, while under the oversight of the Sunday School Board, is a separate and distinct feature of the Assembly program, though all the resources of the Assembly are at its disposal.

The actual guidance of the boys will be in the hands of men who have had experience in working with boys in their own communities and churches and who have achieved success in leading boys into the larger life. Most of them come from the colleges of the South and they are in a position to enter into the activities with the boys, to share their life and to go along with them in the quest for better things.

The equipment of the Camp includes huts adequate to house the boys comfortably, one lake and two swimming pools, a dining room, recreation hall and tennis courts. The campers have access also to all of the Assembly Grounds. Besides these, opportunity will be afforded to play golf on the Municipal Course of Asheville, since there is transportation each day to and from the course.

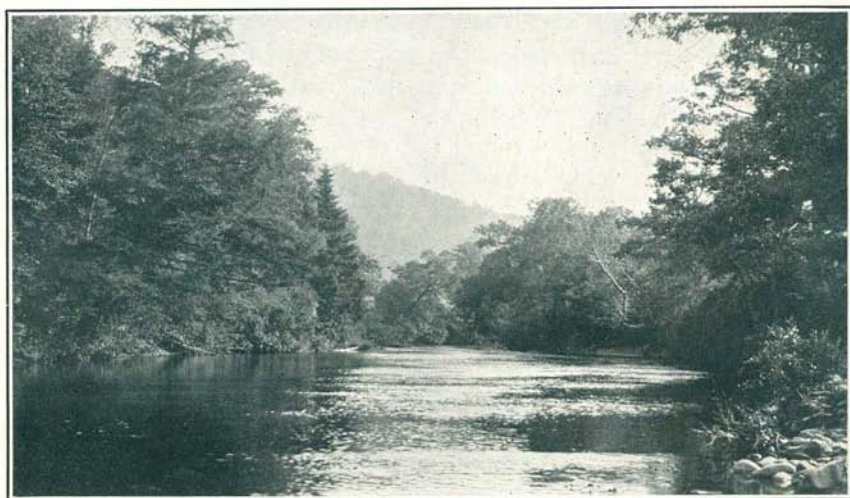
A day's program will be a combination of recreation, study, and devotion. The towering mountain peaks and the picturesque streams and falls are strong incentives to hiking, there will be supervised canoeing on the lake, and swimming only at regular periods. Baseball and basket ball leagues and tennis tournaments will stimulate interest in

these sports and will attract devotees during parts of the day. Physical activity will by no means take all of the time. The morning periods will be set aside and opportunity will be given to those who wish to be coached in their studies either for review or in advanced work. No camper will be permitted to take more than two classes. The spiritual side will in nowise be neglected, since at some time each day a period will be set aside for inspirational services led by members of the camp staff or by prominent visitors at Ridgecrest.

Sunday will be observed in common with the rest of the Ridgecrest community. The boys will attend Sunday School and morning church services. The rest of the day will be a break in the regular strenuous program observed during the week days. Probably inspirational talks will be given Sunday night to the boys alone on the camp grounds.

### HEALTH

Camp Ridgecrest is fortunate in having Dr. T. W. Ayers, beloved missionary to China, who was for many years superintendent of a large Baptist hospital in China. He will be Camp Physician and his services will be available at all times. Not only will he minister to the physical needs, however, for he will at different times give accounts of his rich experiences on the mission field. Association with Dr. Ayers will be highly cherished by every camper.



A PEACEFUL RIVER NEAR RIDGECREST, NORTH CAROLINA





### **RIFLE SHOOTING**

There will be established in camp a unit of the National Rifle Association. Rifles and targets will be furnished, but these will be used only when supervised by an instructor and at designated periods of the day. In rifle shooting opportunity is given to win several medals offered by the Association and many of these should be won by the campers.

### **LIFE-SAVING**

At Camp Ridgecrest there will be members of the Red Cross Life-Saving Corps. These men will be in charge of the swimming periods and will keep close guard over those in the water. At definite periods the chance will be given campers to take the tests in life-saving and if passed successfully, emblems and badges will be awarded. Valuable training and experience should be gained in this way.

### **SCOUTING**

Living together for weeks in the open mountains will afford much opportunity for Scouts to make material advancement in their tests. Among the members of the camp staff there will be men of experience and of authorized rank who will encourage and guide the campers in attainment in this interesting and important pursuit.

## **The Following is a Sample of a Day's Program**

- 7:10—First call.
- 7:15—Reveille.
- 7:20—Setting-up exercises.
- 7:35—Morning “dip.”
- 7:50—First call for inspection of huts.
- 7:55—Second call.
- 8:10—First call for breakfast.
- 8:15—Second call.
- 9:00—Study period.
- 9:30—First class period.
- 10:15—Second class period.
- 11:00—Rifle shooting and organized coaching.
- 11:45—Life-saving.
- 12:15—Swimming period.
- 12:45—End of swimming period.
- 1:00—First call for dinner.
- 1:05—Second call.
- 1:45—Rest period.
- 2:30-5:15—Hikes, baseball, tennis, basket ball, etc.
- 5:15-5:45—Swimming period.
- 6:00—First call for retreat.
- 6:05—Second call for retreat.
- 6:15—First call for supper.
- 6:20—Second call for supper.
- 7:05—First call for evening inspection.
- 7:10—Second call for evening inspection.
- 7:20-8:00—Organized games at dusk.
- 8:00-9:30—Inspirational talks, radio programs,  
stunts, basket ball leagues, etc.
- 9:30—Tattoo.
- 9:45—Taps.



## CANOEING

With several well-equipped canoes on the lake and with constant supervision and instruction, canoeing should afford many hours of enjoyable and helpful activity. Should there be sufficient demand, plans are being made to offer canoe trips down the beautiful French Broad from Horseshoe to Asheville, a distance of thirty-five miles, through unusual mountain scenery including the Vanderbilt estate.

## PHYSICAL EQUIPMENT

The camp is located on the grounds of the Southern Baptist Assembly and has access to all of the equipment of the Assembly. The center of the activities of camp is a large square of huts which will house the counselors and boys. These huts are equipped with electric lights, comfortable beds, and are well screened. Just a short distance from the center of camp are the tennis courts, the baseball diamond, the lake, and one swimming pool. Large Philethea Hall will be the scene of many activities; here the meetings of the group as a whole will be held. Supervision of and plans for the meals will be in the hands of the hotel authorities, but these will be served to the campers as a group and in one of the camp buildings. The water supply is from abundant,



THE HOLLOW SQUARE OF SLEEPING CABINS

1930

July 2-August 28, 1930



clear, and purest mountain springs and a new and modern sewerage system has recently been installed throughout the whole Assembly property and in the surrounding community.

### EXPENSES

Because of the relationship with the Baptist Assembly and because it is an agency of the Baptist Sunday School Board, not with the purpose of financial gain but of aiding in the development of character in boys, Camp Ridgecrest is in a position to offer maximum advantages at minimum cost. The entire session is for eight weeks beginning Wednesday, July 2, and ending August 28. The cost for this period will be \$125.00 which includes everything besides railroad fare. July 30 will mark a break in the session and will be the ending of one term and the beginning of another. Campers are urged to remain for two terms and the entire session, but where this is impossible they may come for either of the two terms. The cost of the first term from July 2 to July 30 will be \$65.00, and the expense for the last term beginning July 30 and ending August 28 will be \$75.00. A fee of \$10.00 is paid with the application, the remainder at the opening of camp.



THE MOUNTAIN COUNTRY, RIDGECREST CAN BE LOCATED WHERE THE ROAD CROSSES THE  
IN FACT, A STREAM IN FRONT OF CAMP DIVIDES ITS WATERS, PAR

## REDUCED RAILROAD RATES

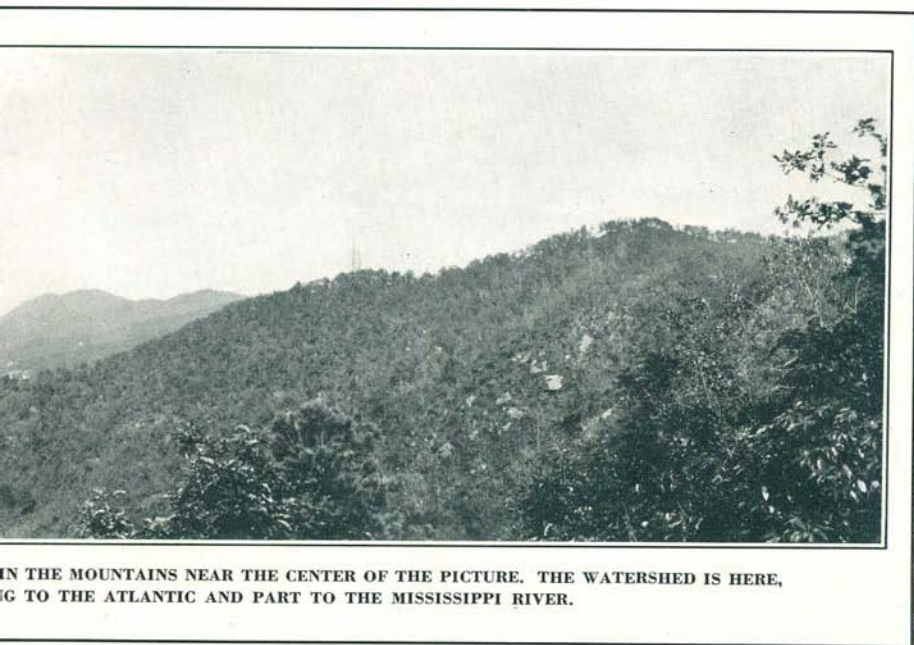
Reduced summer rates on railroads will be available at any time. These rates are one-way fare plus sixty per cent of a one-way fare.

## SCHOLARSHIPS

There will be a limited number of work-scholarships which will provide for half of the camp fee. Boys desiring to secure such scholarships should send their applications to the director, Charles W. Burts, 161 Eighth Ave. No., Nashville, Tennessee. From the group of applicants the winners will be chosen.

## WHAT TO BRING

It is not at all necessary for each boy to be provided with an entirely new set of equipment. There are many things which are used throughout the year that can be utilized in camp. The following list is merely a suggestion from actual experience in camp life. Where substitutions can be made from the things which the boy has, this is encouraged. The boys are urged to bring any musical instrument that they might have. If a sufficient number of musicians are obtained, a camp band will be organized. Also bring any costumes which might help in the preparation of stunts or plays.



IN THE MOUNTAINS NEAR THE CENTER OF THE PICTURE. THE WATERSHED IS HERE,  
IG TO THE ATLANTIC AND PART TO THE MISSISSIPPI RIVER.

July 2-August 28, 1930



## **The Suggested List of Things to Bring is as Follows**



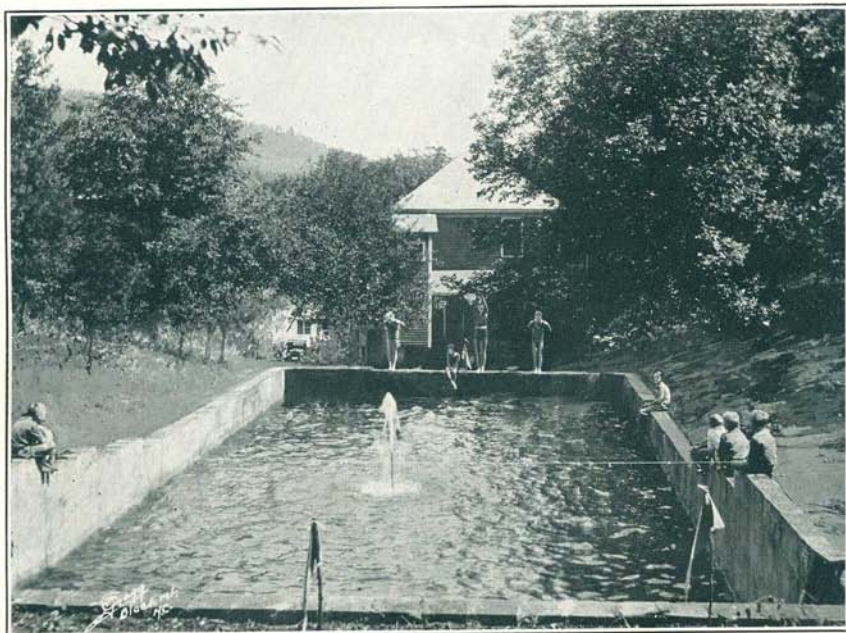
- 4 white shirts
- 5 khaki shirts
- 5 gym shirts
- 4 gym pants
- 8 pairs socks or stockings
- 12 handkerchiefs
- 1 good suit for dress
- 1 pair dress shoes
- 1 pair hiking shoes
- 1 pair tennis shoes
- 1 heavy sweater
- 2 pairs white ducks
- 2 double blankets or three single
- 4 sheets
- 2 pairs pillow cases
- 6 towels
- 1 bathing suit
- 1 rubber poncho
- Toilet articles
- Tennis rackets and balls, baseball glove or mit,  
knife, etc.
- 1 raincoat
- 1 bathrobe

## MILITARY FEATURES

Camp Ridgecrest in no way poses as a military camp, but there are adopted certain features which are helpful to all boys in the formation of constructive habits. The days are planned in routine and there are formations indicated by bugle calls. Promptness on these formations is expected. Setting-up exercise led by one of the counselors is the first formation of the day and is of great aid in "waking up." Preceding breakfast and following supper is inspection of the huts, which are to be clean and in order. Counselors will visit each hut and an award will be given the best, each day. At 6:05 in the afternoon will be retreat or the lowering of the flag. Campers and counselors will stand in formation and salute as the flag is lowered. Then, there is a set time for retiring and for rising. At 9:45 lights are to be out and noise is to cease. Quiet will continue until 7:10 in the morning. With these regulations there is a definite understanding of what everyone is to do at a set time and training is secured in a way no other system can establish.

## HIKES AND TRIPS

The climate of the mountains of North Carolina is so invigorating and the scenery is so alluring that one is eager to walk, stroll, or hike. With a group of boys the tendency is to band together in an organized



ONE OF THE CAMP SWIMMING POOLS FILLED FROM A MOUNTAIN LAKE

July 2-August 28, 1930



hike to a definite point. Surrounding Ridgecrest there are peaks and falls of varying distance and importance. At the beginning of the camp season short hikes will be taken to the smaller peaks and the nearby falls. Each Saturday a longer trip will be planned, and toward the end of the season the big hike will be taken to the top of Mt. Mitchell, the highest point east of the Mississippi. Should there be sufficient demand, lifts in automobiles or truck will be given to points of interest too distant for walking. In short, at all times, there will be some trip for the campers to be looking forward to.

### LEAGUES AND AWARDS

Since there is much to be gained by group co-operation and rivalry, in baseball and basket ball there will be leagues with scheduled games. The winning teams will be duly rewarded. In tennis tournaments each term will stimulate interest. The campers are divided into classes according to age so that the competition will be fair for all. At the end of each term, also, there are swimming and track meets in which the campers are given the chance to give exhibition of their ability and improvement. To the winners in the meets of the last term will be given awards. Besides these honors there are two which are most coveted. These are the Best All-round Camper and the Best All-round Athlete. The former will be chosen by the Staff on the merits of attitude and spirit, while the latter will be determined by the results in the final tournaments and athletic meets.

Camp Ridgecrest is primarily designed for Baptist boys between the ages of eight and sixteen, but it is open to all boys who wish to enjoy four or eight weeks of wholesome recreation and of well-rounded development, under the most favorable influences, in one of the beauty spots of the world. There will be representatives from most of the Southern states who will accompany and supervise the campers from their respective states. Further information concerning these representatives and concerning any feature of Camp Ridgecrest will be gladly given by the director, Charles W. Burts, who can be reached care of the Baptist Sunday School Board, 161 8th Ave., North, Nashville, Tennessee.





*July 2-August 28, 1930*



## WESTERN NORTH CAROLINA

ONE of Nature's most highly favored spots, Western North Carolina, many years ago recognized as an outstanding section for variety and beauty of natural scenery, because of the entire region and the height of numerous peaks of both the Blue Ridge and the Great Smoky Mountains rising above the clouds there, was very properly named "The Land of the Sky."

Two ranges of the magnificent Appalachian chain of mountains present their most appealing charms in this section of the Old North State. The Great Smokies, towering in indescribable beauty, form the boundary line between North Carolina and Tennessee and seem to pose in friendly rivalry with the Blue Ridge, famed in song and story, in affording to Western North Carolina a variety of beautiful mountain scenery unequaled anywhere else in the world.

The Great Smokies, reaching their highest altitudes along the crest of the range at the Tennessee boundary line, continue to roll and spread in an easterly direction on the Carolina side, covered with virgin forest and hundreds of varieties of wild flowers, rising and falling in an unending panorama of peak, plateau, ridge and valley, where streams and lakes and enchanting views have attracted visitors from all over the world.

The Blue Ridge traverses "The Land of the Sky" with some of the most noted of its world-renowned scenery, presenting such points of world-wide interest as Chimney Rock, Blowing Rock and the Royal Gorge. Mount Mitchell with an altitude of 6,711 feet above sea level, the highest point in Eastern America, is a peak in the Black Mountain range, a short and exceedingly high range, which lies parallel to the Blue Ridge.

The people of Western North Carolina have for generations known and loved the mountains of these three ranges, and even before they were explored and inhabited except by a few pioneers and their families, among those who displaced the red man of former days, have

viewed the lofty hills and ridges and gazed upon their splendor in awe akin to worship, wondering what their vast expanse might some day disclose.

They have seen them enveloped in masses of fleecy clouds with only their peaks appearing above; they have watched them as they glistened with a mantle of snow or heavy frost in winter; they have seen the great giants of the virgin timber lands don their new attire each spring; in summer they have paused under their great shadows or climbed to their topmost heights to stand in admiration of the entrancing panorama; they have witnessed their appearance in a gorgeous array of color in autumn, when no artist could adequately portray them.

But these, said by geologists to be the world's oldest mountains, constant reminders of the handiwork of the Creator of all Beauty, waited for thousands of years for the coming of the multitudes that inevitably find their way to gaze upon the wonders of Nature, wherever found—the coming of travelers and visitors from all sections of the nation and from abroad to revel in the beauty and charm of the magnificent “Land of the Sky.”

Many years ago the fame of this wonderland spread, first throughout the South and Southeast. From other sections of North Carolina, from adjoining States, and from the more distant States of the South, came visitors to find the supreme joy of living in summer among the highlands, swept by cool breezes laden with the fragrance of wild flowers and the odor of the forest, where, from hundreds of elevations, they could spend hours, days and weeks in the contemplation of the work of Nature at her best.

Then, to the East, the North, and to the West went the word that here had been found a vast display of the handiwork of the Creator which no individual could live long enough to fully comprehend because of its scope and magnitude.

Travel by stagecoach first developed roads that were tortuous but were eagerly traveled by those who felt impelled to keep on going upward into the heart of the hills. Railroads came later, and villages that had nestled in the valleys or on the slopes of the mountains became live towns. The towns that had slowly, during many years, developed into trading centers for the natives and as headquarters for scientists, explorers, tourists and vacationists, became modern cities, linked by a



network of improved highways over which automobiles have brought millions of men and women to marvel at the grandeur of "The Land of the Sky," and thousands of boys and girls to start upon life's journey with an appreciation of the beautiful in Nature and to build the foundation of future perfect health by spending their vacations in the numerous camps among the mountains of Western North Carolina—"The Land of the Sky."



*Visit your boys at Camp Ridgecrest  
An interesting program, good accommodations  
and many sports can be had  
at the  
**SOUTHERN BAPTIST ASSEMBLY**  
Ridgecrest, North Carolina*





## **RATES**

### **Fares:**

Summer tourist rate fares on the basis of one fare plus sixty per cent for the round-trip with a final return limit of October 31.

### **Selling Territory:**

From same points in Southeastern Passenger Association Territory as was authorized for these occasions in 1929 as published in Local and Joint Passenger Tariff No. 9572 issued by W. H. Howard, agent.

### **Tickets:**

Validating form of tickets to be used, requiring validation at the assembly grounds, i. e., Montreat, Blue Ridge, Ridgecrest, Lake Junaluska, or Hendersonville (for Kanuga Lake), as the case may be, in similar manner as was done for the season 1929.

The Norfolk and Western Ry. and Chesapeake and Ohio Ry. have advised they will establish fares from the same points on their lines as was done for the season 1929.





*Come to*  
**RIDGECREST**  
*this Summer*